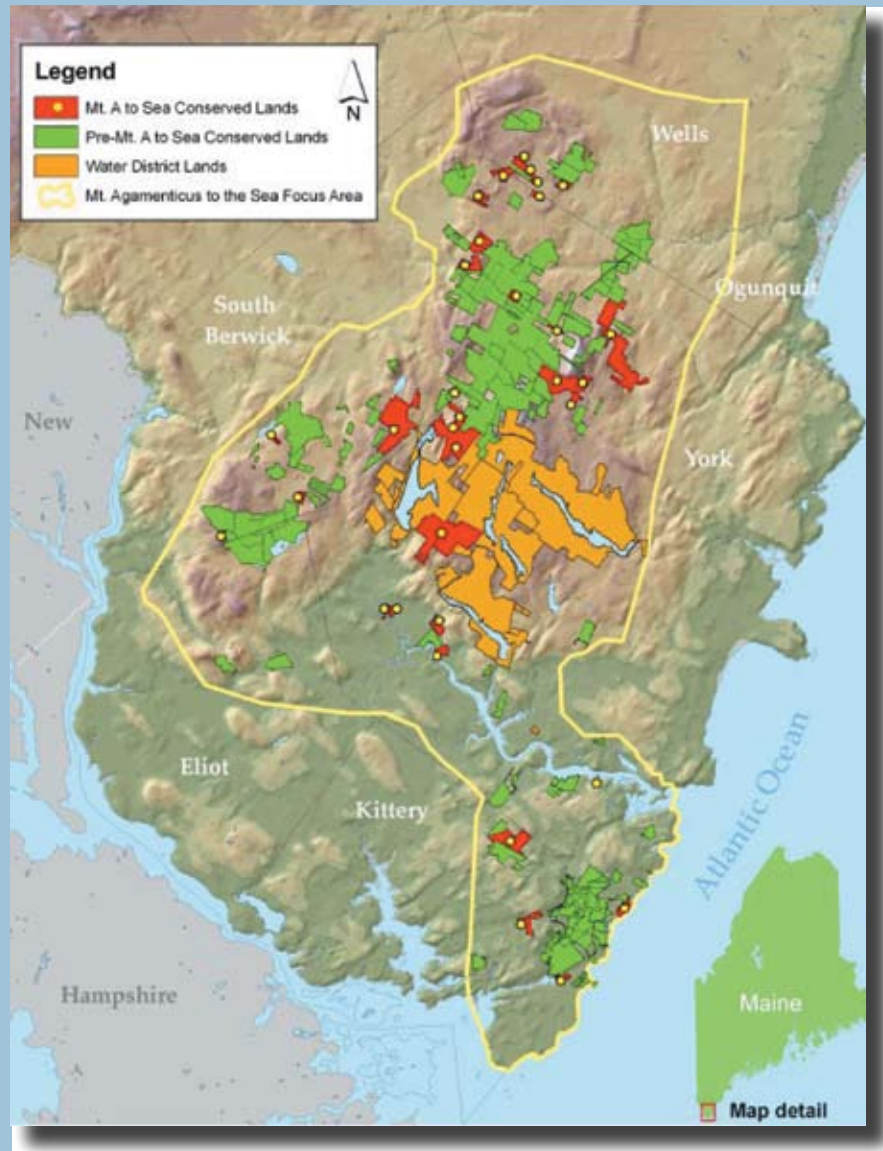


An Evaluation of the Mt. Agamenticus To The Sea Conservation Initiative

An Assessment of the Mt. Agamenticus to the Sea Conservation Initiative

October 2002 - October 2006



... to protect a network of priority conservation lands from Mt. Agamenticus through the marshes, fields and forests buffering the York River and Brave Boat Harbor estuary to the largely undeveloped forest interior and coastline of Gerrish Island.

Vision statement in the Conservation Plan, 2004

Martha West Lyman
Quebec-Labrador Foundation/Atlantic Center for the Environment
October, 2006

With support from the Partnership for Effective Non-Profits and the New Hampshire Charitable Foundation-Piscataqua Region

MISSION STATEMENT



To conserve the diverse landscapes encompassing the
York River, the Brave Boat Harbor Estuary,
Gerrish and Cutts Islands
and the Mt Agamenticus region.





P.O. Box 1241
York Harbor, ME 03911
207-363-7400
www.mta2sea.org

